

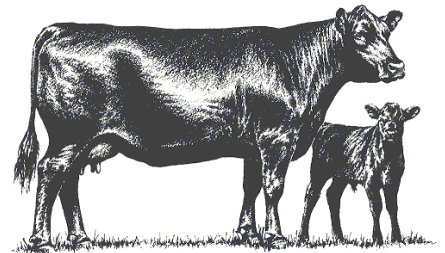
2014 North Central Cow-Calf Workshop

February 14, 2014
Stony Pike Livestock Auction
830 E Main St. Logansport, IN

8:30 A.M. - 9:00 A.M. – Registration, Coffee & Donuts

9:00 A.M. - 11:30 AM – Program

- ❖ **"Beef Cattle Market Update"** - Tamara Ogle – Extension Educator, Purdue Extension Cass County. What will 2014 bring for the cattle markets?
- ❖ **"Effects of Feeding Ethanol Co-Products on Reproduction in Beef Cows"** - Dr. Kara Stewart, Purdue Animal Sciences. This presentation will include information on reproduction implications from feeding products like distiller's grains and corn gluten.
- ❖ **"Improving the Efficiency of Your Cow Herd"** - Dr. D.J.Weimer – Livestock Veterinary Services. Dr. Weimer will discuss methods of improving efficiency and profitability within the cow herd from the health, nutrition, and marketing perspectives.



This program is sponsored by Purdue University Extension Service in Cass and Carroll Counties. Join us for this educational workshop geared to help beef producers improve their operations. **Mark your calendar and make plans to attend! Register today by calling the Cass County Cooperative Extension Office at (574) 753-7750!**

If you need a reasonable accommodation to participate in this program, prior to the meeting, contact Tamara Ogle at (574) 753-7750 or (888) EXT-INFO.

It is the policy of the Purdue University Cooperative Extension Service that all persons have equal opportunity and access to its educational programs, services, activities, and facilities without regard to race, religion, color, sex, age, national origin or ancestry, marital status, parental status, sexual orientation, disability or status as a veteran.

Purdue University is an Affirmative Action institution. This material may be available in alternative formats.