

LIVESTOCK HIGHLIGHTS

The total value of the four major species of livestock and poultry on Indiana farms January 1, 2011 (December 1, 2010 for swine and chickens) amounted to \$1,247.9 million, up 11 percent from a year earlier.

HOG AND PIG numbers (December 1, 2010), at 3.65 million, were up 1 percent from a year earlier. The average value per head increased from \$84.00 in 2009 to \$110.00 in 2010. This raised the total inventory value to \$401.5 million, 33 percent above a year ago. Indiana remained in fifth place in the nation for the number of hogs on hand December 1, 2010.

CATTLE inventory numbers, at 850,000, were down 2 percent from January 1, 2010 but value per head, at \$920 was \$50 above the previous year. Total cattle inventory value, at \$782.0 million, increased 3 percent from the \$756.9 million last year. Cows and heifers that have calved totaled 385,000 head, down 1 percent

from a year earlier. Of this total, 213,000 were beef cows, down 4 percent; and 172,000 were milk cows, up 2 percent from the previous year.

Total **SHEEP** inventory, at 50,000 head for January 1, 2011, was down 4 percent, from a year earlier. Breeding sheep totaled 44,000 head. Average value per head at \$227.00, was up \$40.00 from 2010. Total inventory value at \$11.4 million was 17 percent above the previous year.

Total **CHICKEN** inventory, excluding broilers, on December 1, 2010, at 30.6 million birds, was down 3 percent from last year. With this inventory, Indiana held on to third place in the nation for total chickens, excluding broilers, and remained in third position for hens and pullets of laying age (23.4 million). The total value of the chicken inventory was \$52.1 million, down 8 percent from 2009. The value per bird decreased \$0.10 from the previous year to \$1.70.

LIVESTOCK INVENTORY NUMBERS, INDIANA RECORD HIGHS AND LOWS

Species	Record High		Record Low		Year Series Began
	Number of Head	Year	Number of Head	Year	
All Hogs	5,393,000	1962	2,475,000	1893	1866
Hog Breeding Herd	721,000	1963	280,000	2009	1963
All Cattle and Calves	2,225,000	1976	830,000	2004	1867
Milk Cows and Heifers that have Calved ^{1/}	848,000	1945	135,000	1998	1867
Beef Cows and Heifers that have Calved ^{1/}	618,000	1976	83,000	1925	1920
All Sheep and Lambs	985,000	1938	50,000	2011	1920
All Chickens Excluding Commercial Broilers	32,343,000	2006	13,963,000	1961	1924
Turkeys Raised	16,000,000	2010	141,000	1929	1929

^{1/} Prior to January 1, 1970, definition was milk cows and beef cows 2 years old and over.

HOGS AND PIGS

The total pig crop in 2010 was up 6 percent from the pig crop in 2009. Sows farrowed during the year was up 6 percent from the previous year, while litter rates increased 1 percent to 9.50. A \$9.80 increase in average price per hundredweight resulted in a 22 percent increase in cash receipts for 2010. Gross income of \$1.02 billion (cash receipts plus value of home consumption) increased 22 percent from a year earlier.

NUMBER OF HOGS ON FARMS BY CLASS, INDIANA, DECEMBER 1, 2005-2010

Class of Livestock	2005	2006	2007	2008	2009	2010 ^{1/}
Thousand Head						
Hogs and Pigs	3,250	3,350	3,700	3,550	3,600	3,650
Breeding Stock	300	320	320	280	280	290
Market Hogs	2,950	3,030	3,380	3,270	3,320	3,360

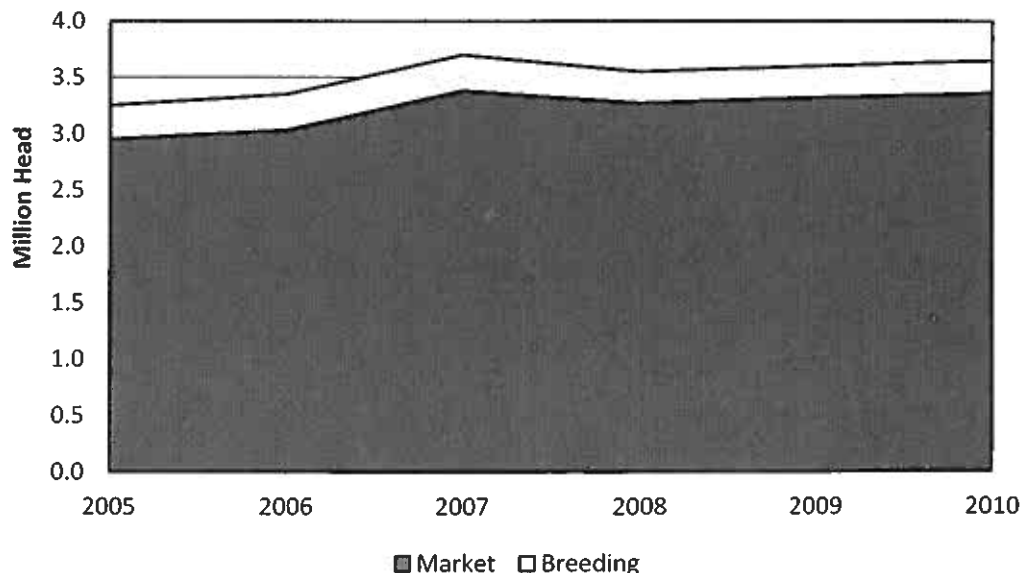
^{1/} Preliminary.

NUMBER AND VALUE OF HOGS ON FARMS INDIANA, DECEMBER 1, 2005-2010

December 1	Hogs and Pigs	Average Value Per Head	Total Value
	Thousand Head	Dollars	Thousand Dollars
2005	3,250	96.00	312,000
2006	3,350	91.00	304,850
2007	3,700	75.00	277,500
2008	3,550	91.00	323,050
2009	3,600	84.00	302,400
2010 ^{1/}	3,650	110.00	401,500

^{1/} Preliminary.

HOGS AND PIGS INVENTORY INDIANA, DECEMBER 1, 2005-2010



HOGS AND PIGS

NUMBER OF HOGS ON FARMS BY WEIGHT GROUPS BY QUARTER, INDIANA, 2005-2011

Year and Month	Total Breeding Herd	Market Hogs and Pigs					Total	Total Inventory
		Under 50 Pounds ^{1/}	50-119 Pounds ^{1/}	120-179 Pounds	180 Lbs and Over	Total		
Thousand Head								
March 1, 2005	280	1,030	660	580	500	2,770	3,050	
June 1, 2005	290	1,070	720	550	520	2,860	3,150	
September 1, 2005	290	1,050	720	550	490	2,810	3,100	
December 1, 2005	300	1,060	740	560	590	2,950	3,250	
March 1, 2006	300	1,030	700	560	510	2,800	3,100	
June 1, 2006	310	1,080	760	550	500	2,890	3,200	
September 1, 2006	320	1,080	770	590	540	2,980	3,300	
December 1, 2006	320	1,120	760	580	570	3,030	3,350	
March 1, 2007	310	1,070	730	580	560	2,940	3,250	
June 1, 2007	300	1,120	780	590	560	3,050	3,350	
September 1, 2007	300	1,120	840	640	600	3,200	3,500	
December 1, 2007	320	1,260	850	680	590	3,380	3,700	
March 1, 2008	310	1,100	940	680	620	3,340	3,650	
June 1, 2008	290	1,050	1,030	670	610	3,360	3,650	
September 1, 2008	280	1,090	1,000	620	610	3,320	3,600	
December 1, 2008	280	1,090	960	610	610	3,270	3,550	
March 1, 2009	270	1,140	940	620	580	3,280	3,550	
June 1, 2009	270	1,100	1,040	630	560	3,330	3,600	
September 1, 2009	280	1,140	970	600	610	3,320	3,600	
December 1, 2009	280	1,080	970	640	630	3,320	3,600	
March 1, 2010	290	1,140	900	620	600	3,260	3,550	
June 1, 2010	290	1,120	1,000	620	620	3,360	3,650	
September 1, 2010	290	1,070	1,000	680	610	3,360	3,650	
December 1, 2010	290	1,040	950	670	700	3,360	3,650	
March 1, 2011	290	1,080	870	610	700	3,260	3,550	
June 1, 2011	300	1,070	1,010	670	650	3,400	3,700	

^{1/} Data for 2005-2007 is for categories "Under 60 Pounds" and "60-119 Pounds", respectively.

HOGS AND PIGS

SOWS FARROWED AND PIG CROP BY QUARTER AND TOTAL, INDIANA, 2005-2011

Year	Spring		Fall		Total
	Dec 1/ - Feb	Mar - May	Jun - Aug	Sep - Nov	
Sows Farrowed (Thousands)					
2005	130	135	140	135	540
2006	130	135	140	140	545
2007	140	145	150	155	590
2008	150	145	145	140	580
2009	140	135	135	135	545
2010	140	145	145	145	575
2011	145	145			
Pigs Per Litter					
2005	8.80	8.85	8.90	9.00	8.89
2006	8.90	8.90	8.95	8.90	8.91
2007	8.80	8.95	9.10	9.00	8.97
2008	9.00	9.10	9.25	9.20	9.14
2009	9.30	9.40	9.50	9.55	9.44
2010	9.40	9.60	9.40	9.60	9.50
2011	9.50	9.55			
Pig Crop (Thousands)					
2005	1,144	1,195	1,246	1,215	4,800
2006	1,157	1,202	1,253	1,246	4,858
2007	1,232	1,298	1,365	1,395	5,290
2008	1,350	1,320	1,341	1,288	5,299
2009	1,302	1,269	1,283	1,289	5,143
2010	1,316	1,392	1,363	1,392	5,463
2011	1,378	1,385			

1/ December preceding year.

"Just Makin Bacon"
 Photographer ~~ Brooke Bond
 Age 9, Winchester, IN



HOGS AND PIGS

HOG PRODUCTION AND DISPOSITION INDIANA, 2005-2011

Year	On Hand Dec 1 Preceding Year	Spring		Fall		Inship- ments	Market- ings ^{1/}	Farm Slaughter	Death
		Sows Farrowed	Pigs Born	Sows Farrowed	Pigs Born				
Thousand Head									
2005	3,200	265	2,339	275	2,461	1,890	6,354	1	285
2006	3,250	265	2,359	280	2,499	1,925	6,427	1	255
2007	3,350	285	2,530	305	2,760	2,315	6,979	1	275
2008	3,700	295	2,670	285	2,629	2,718	7,916	1	250
2009	3,550	275	2,571	270	2,572	2,862	7,678	2	275
2010	3,600	285	2,708	290	2,755	2,632	7,753	2	290
2011	3,650	290	2,763						

^{1/} Includes custom slaughter for use on farms where produced and State outshipments, but excludes interfarm sales within the State.

HOG PRODUCTION AND INCOME INDIANA, 2005-2010

Year	Production ^{1/}	Marketings ^{2/}	Price Per 100 Pounds	Cash Receipts ^{3/}	Value Home Consumption	Gross Income
	Thousand Pounds		Dollars		Thousand Dollars	
2005	1,485,217	1,527,608	49.00	770,914	752	771,666
2006	1,484,896	1,529,705	45.00	714,114	689	714,803
2007	1,607,328	1,638,216	46.10	783,507	706	784,213
2008	1,726,027	1,803,710	49.10	917,338	756	918,094
2009	1,738,802	1,810,835	44.80	839,363	807	840,170
2010	1,753,897	1,798,892	54.60	1,023,236	986	1,024,222

^{1/} Adjustments made for changes in inventory and for inshipments.

^{2/} Excludes custom slaughter for use on farms where produced and interfarm sales within the State.

^{3/} Includes allowance for higher average price of state inshipments and outshipments of feeder pigs. Receipts from marketings and sale of farm slaughter.

HOGS AND PIGS

INSHIPMENTS OF FEEDER PIGS DIRECT FROM STATES BY STATE OF ORIGIN, REPORTED BY STATE VETERINARIAN: INDIANA, 2005-2010

State of Origin	2005	2006	2007	2008	2009	2010
Number of Head						
Alabama	---	---	---	---	12,690	52,385
Arkansas	---	---	---	1,530	4,725	1,066
Colorado	6,659	508	130	---	1/	---
Georgia	7,100	4,600	7,850	19,550	---	---
Idaho	---	---	---	---	7,818	---
Illinois	305,810	336,372	483,256	554,676	563,526	559,869
Iowa	30,965	4,230	22,637	65,079	35,037	33,090
Kansas	298	475	4,400	1/	1/	1/
Kentucky	37,449	48,036	55,960	61,747	55,901	60,905
Michigan	186,563	147,661	250,570	202,278	297,335	232,684
Minnesota	889	1,155	1,050	19,785	1,280	---
Missouri	3,827	4,778	11,285	38,066	49,393	41,902
Nebraska	1/	1/	5,314	1/	6,999	6,052
New York	---	---	---	425	4,585	---
North Carolina	649,156	747,822	890,054	957,033	888,938	718,659
North Dakota	---	---	---	---	60,548	---
Ohio	256,663	321,436	355,033	372,315	279,152	313,083
Oklahoma	162,298	76,469	30,239	93,280	202,607	221,814
Oregon	---	---	---	---	2,200	---
Pennsylvania	---	2,200	3,200	27,694	15,150	19,881
South Carolina	37,250	19,630	6,600	10,450	31,250	34,100
South Dakota	---	400	2,000	---	1,100	---
Tennessee	19,892	5,407	3,250	---	---	2,125
Texas	1/	6,580	6,262	3,392	---	---
Virginia	375	---	---	---	---	---
West Virginia	---	---	---	600	---	---
Wisconsin	---	---	6,500	6,300	6,862	4,230
Other States and Foreign	124,860	169,232	176,318	279,070	190,549	229,904
Total	1,830,054	1,896,992	2,321,908	2,713,270	2,717,645	2,531,749

1/ Combined in "Other States and Foreign".

INSHIPMENTS OF HOGS AND PIGS REPORTED BY STATE VETERINARIAN INDIANA, 2005-2010 1/

Year	Jan	Feb	Mar	Apr	May	Jun	Jul	Aug	Sep	Oct	Nov	Dec	Total
Number of Head													
2005	146,945	146,979	157,980	140,976	186,059	170,897	146,942	180,478	57,570	258,546	157,058	123,127	1,873,557
2006	187,244	163,751	176,207	146,147	225,947	157,758	96,995	129,882	187,042	159,169	160,742	157,546	1,948,430
2007	194,702	184,799	181,481	230,322	33,891	189,383	219,426	318,891	213,037	251,342	193,299	232,772	2,443,345
2008	244,988	199,488	258,911	204,362	152,703	235,258	264,783	246,687	139,877	294,569	243,885	265,935	2,751,446
2009	226,662	273,587	197,587	224,441	178,867	369,272	255,789	224,019	219,163	210,489	215,499	215,993	2,811,368
2010	198,987	199,886	214,338	225,868	199,194	259,304	180,486	250,104	252,406	230,809	185,929	217,294	2,614,605

1/ Includes both feeders and breeding stock.

HOGS AND PIGS

COMMERCIAL HOG SLAUGHTER BY MONTH, INDIANA, 2005-2010 ^{1/}

Year	Jan	Feb	Mar	Apr	May	Jun	Jul	Aug	Sep	Oct	Nov	Dec	Total ^{2/}
Thousand Head													
2005	574.3	549.6	615.8	570.9	530.6	581.5	525.4	634.6	605.7	624.7	648.7	613.1	7,075.0
2006	620.8	559.7	664.1	575.2	606.9	571.8	554.2	658.7	603.5	681.7	672.9	615.7	7,385.2
2007	676.2	564.5	658.1	605.7	622.2	591.2	616.5	666.9	587.8	759.1	720.6	693.2	7,762.1
2008	763.3	660.1	667.0	691.8	640.7	632.9	698.2	670.9	717.2	791.7	678.3	707.9	8,320.0
2009	700.1	658.8	704.4	700.3	630.2	702.5	725.1	708.7	764.3	789.9	711.8	733.5	8,529.6
2010	682.5	663.0	692.9	727.3	651.3	727.8	684.4	721.3	723.5	747.3	776.1	752.0	8,549.3
Average Live Weight													
2005	268	268	267	267	265	263	261	260	259	264	267	267	265
2006	270	267	266	267	264	260	257	256	261	266	267	265	264
2007	265	264	264	263	262	260	256	256	259	263	267	267	262
2008	269	265	265	262	260	259	256	255	258	263	267	268	262
2009	271	269	269	267	266	263	259	261	263	264	263	261	265
2010	263	262	263	264	264	263	260	259	263	271	273	273	265
Total Live Weight (Thousand Pounds)													
2005	153,724	147,119	164,721	152,272	140,842	152,975	137,325	165,090	156,834	164,739	173,406	163,990	1,873,037
2006	167,585	149,220	176,637	153,248	160,030	148,555	142,433	168,350	157,699	180,936	179,313	163,335	1,947,341
2007	179,392	148,746	173,426	159,017	162,784	153,592	157,899	170,691	152,432	199,179	191,935	184,842	2,033,934
2008	204,909	174,902	176,839	181,199	166,571	164,029	178,511	170,887	185,057	208,399	181,003	189,826	2,182,132
2009	189,318	177,422	189,337	186,967	167,832	184,474	187,947	184,763	201,053	208,674	187,278	191,263	2,256,328
2010	179,263	173,628	182,390	191,926	171,641	191,263	177,944	186,777	190,286	202,466	212,144	205,475	2,265,202

^{1/} Includes custom slaughter, but excludes on-farm slaughter.

^{2/} Totals may not add due to rounding.

COMMERCIAL HOG SLAUGHTER NUMBER OF HEAD, INDIANA, 2005-2010

